



## Process Control and Production IT

Roland Willmann,  
Dr. Karl-Heinz Frank  
acp-IT GmbH, Villach/Austria



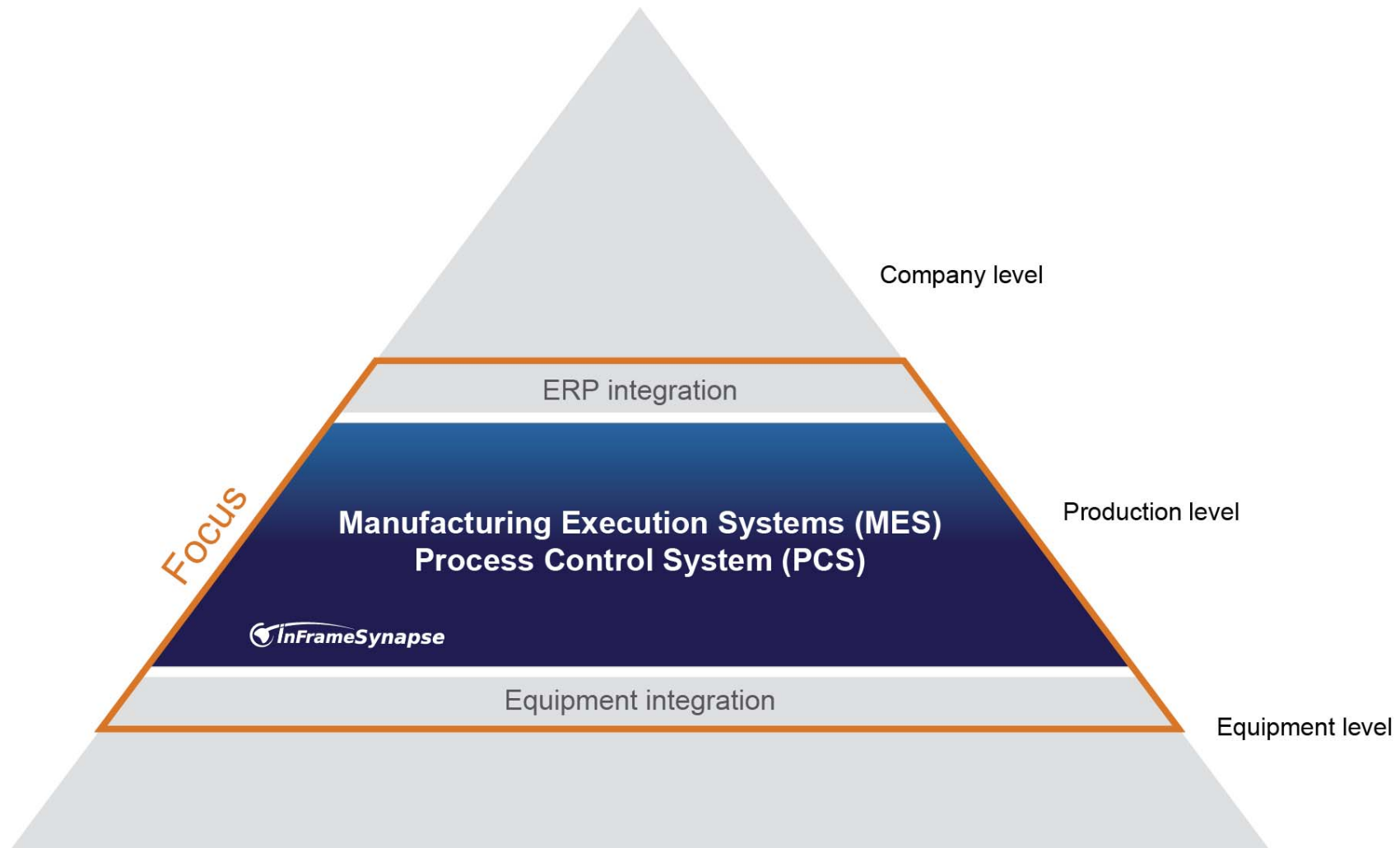
Norbert Schläfli **Maschinen**

## Overview:

- 62 employees
- Locations: Stuttgart, Dresden, Timisoara, Villach
- Key accounts in the areas
  - Photovoltaic
  - Semiconductor
  - Discrete technology manufacturing
  - Automotive
- Partners: FHG IPA, FHG ISE, ACI-ecotec, Boraident
- Founded in 2001 as spin off of Fraunhofer Institute of Production Engineering & Automation, Stuttgart
- Active member of standardization organizations (e.g. SEMI, VDI, VDMA)



Certified according to DIN EN ISO 9001-2000



## InFrameSynapse Product family

**MES**  
(Manufacturing Execution System)

LCS (Line Controller System)  
▶ APS (Advanced Planning & Scheduling)  
EIS (Equipment Integration System)

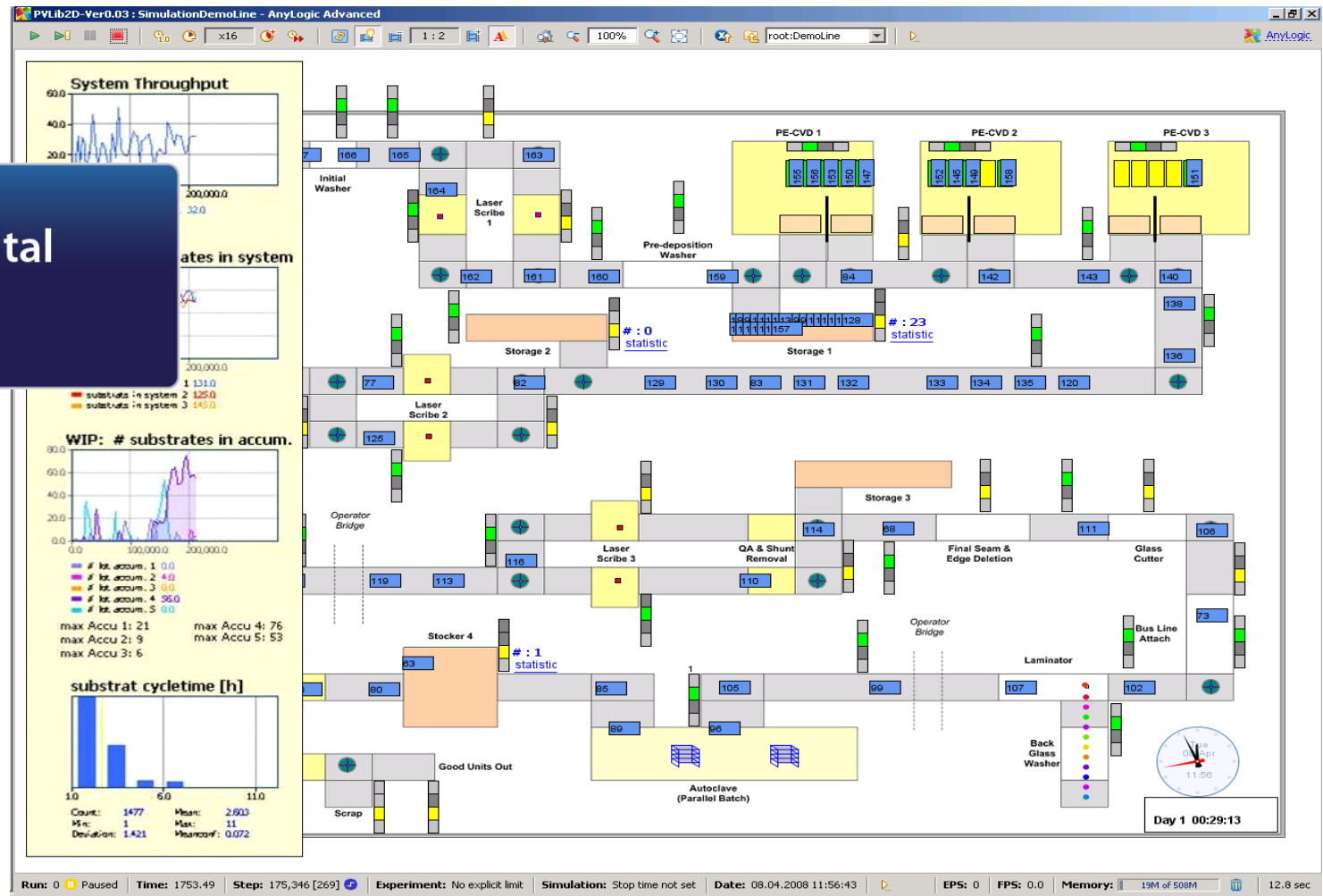
Configurations Synapse MES

**PCS**  
(Process Control System)

SPC (Statistical Process Control)  
MSA (Measurement System Analysis)  
▶ **DIAGNOSTICS**  
FDC (Fault Detection & Classification)  
APC (Advanced Process Control)

Configurations Synapse PCS

## Logistics & Digital Factory



# References (extract)

Light-Rolls

acp-IT AG has supported major companies in successful projects.



## A competent core team

**Roland Willmann** – Project Management and Architect

**Karl Huber** – Lead Software Engineer

**Günter Bäuml** – Technical Support to other Teams

**Iris Begusch** – Quality Assurance

**Pawel Piksa** – Database Expert

**Christian Brunner** – Service and User Interfaces